



RECP #: 752692

RECORDED 5/8/2019 AT 1:12 PM BK# 2620 PG# 1734  
Debra K. Lee, CLERK OF LARAMIE COUNTY, WY PAGE 1 OF 1

# STATE OF WYOMING CORNER RECORD

(In compliance with the CORNER PERPETUATION AND FILING ACT, Wyoming Statutes, 1997 Section 33-29-140, et. seq., and the Rules and Regulations of the Board of Registrations for Professional Engineers and Professional Land Surveyors)

## WEST QUARTER CORNER SECTION 31, T. 18 N., R. 61 W., 6TH P.M., LARAMIE COUNTY, WYOMING

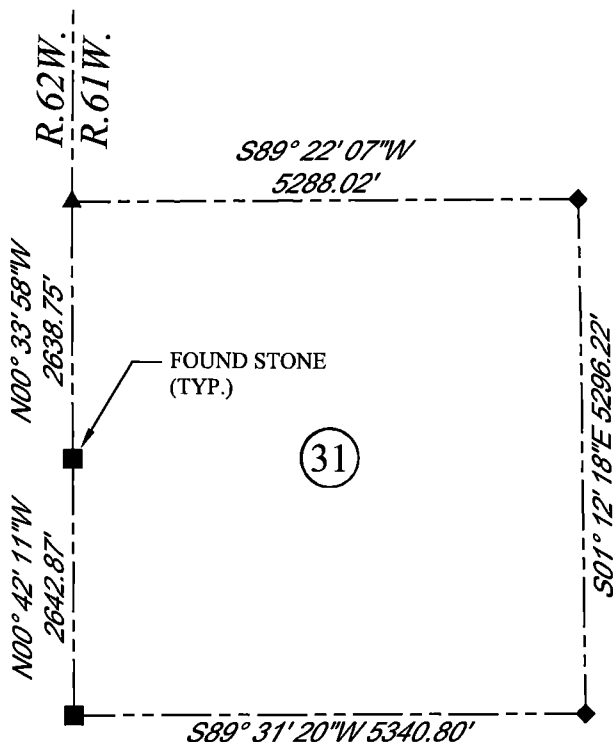
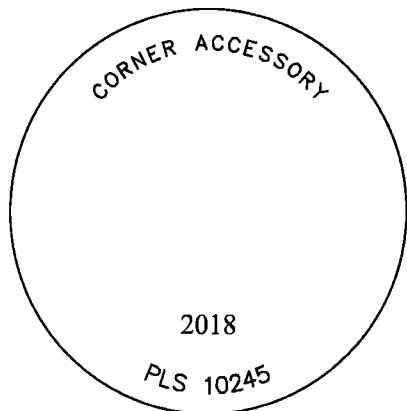
**GLO:** SET A SANDSTONE 18X10X8. 12" DEEP. MARKED 1/4 ON WEST SIDE FOR 1/4 SEC. COR.

**FOUND:** FIRM SET SANDSTONE APPROXIMATELY 13X10X5 DIRECTLY IN NORTH AND SOUTH FENCE LINE. NO MARKINGS FOUND. STONE WAS 0.1' ABOVE SURFACE.

**SET:** 3.25" ALUMINUM CAP ON #5 REBAR, 3" ABOVE SURFACE, MARKED AS SHOWN ON SOUTH SIDE OF FOUND FIRM SET SANDSTONE DIRECTLY UNDER NORTH AND SOUTH FENCE LINE.



SCALE: NONE  
NORTH DETERMINED BY  
G.P.S OBSERVATIONS



### LEGEND:

- FOUND BLM CAP
- FOUND USFS CAP
- FOUND STONE
- FOUND PRIVATE MONUMENT
- ◇ CALCULATED POSITION
- ▲ SET MONUMENT (LS10245)
- SECTION LINE

DATE OF FIELD WORK: 10/02/2018 OFFICE REFERENCE: MERIDEN

### CROSS INDEX DIAGRAM

	1	2	3	4	5	6	7	8	9	10	11	12	13	14	15	16	17	18	19	20	21	22	23	24	25	
A																										
B																										
C		6																								
D					5																					
E																										
F																										
G			7																							
H																										
J																										
K																										
L				18																						
M																										
N																										
O																										
P					19																					
Q																										
R																										
S																										
T						30																				
U																										
V																										
W																										
X																										
Y																										
Z																										
	1	2	3	4	5	6	7	8	9	10	11	12	13	14	15	16	17	18	19	20	21	22	23	24	25	

WOOD  
2615 AVIATION DRIVE  
SHERIDAN, WY 82801  
PH: 307-675-6400



THIS CORNER RECORD WAS  
PREPARED BY ME OR UNDER  
MY DIRECTION AND  
SUPERVISION,  
SEAL AND SIGNATURE

